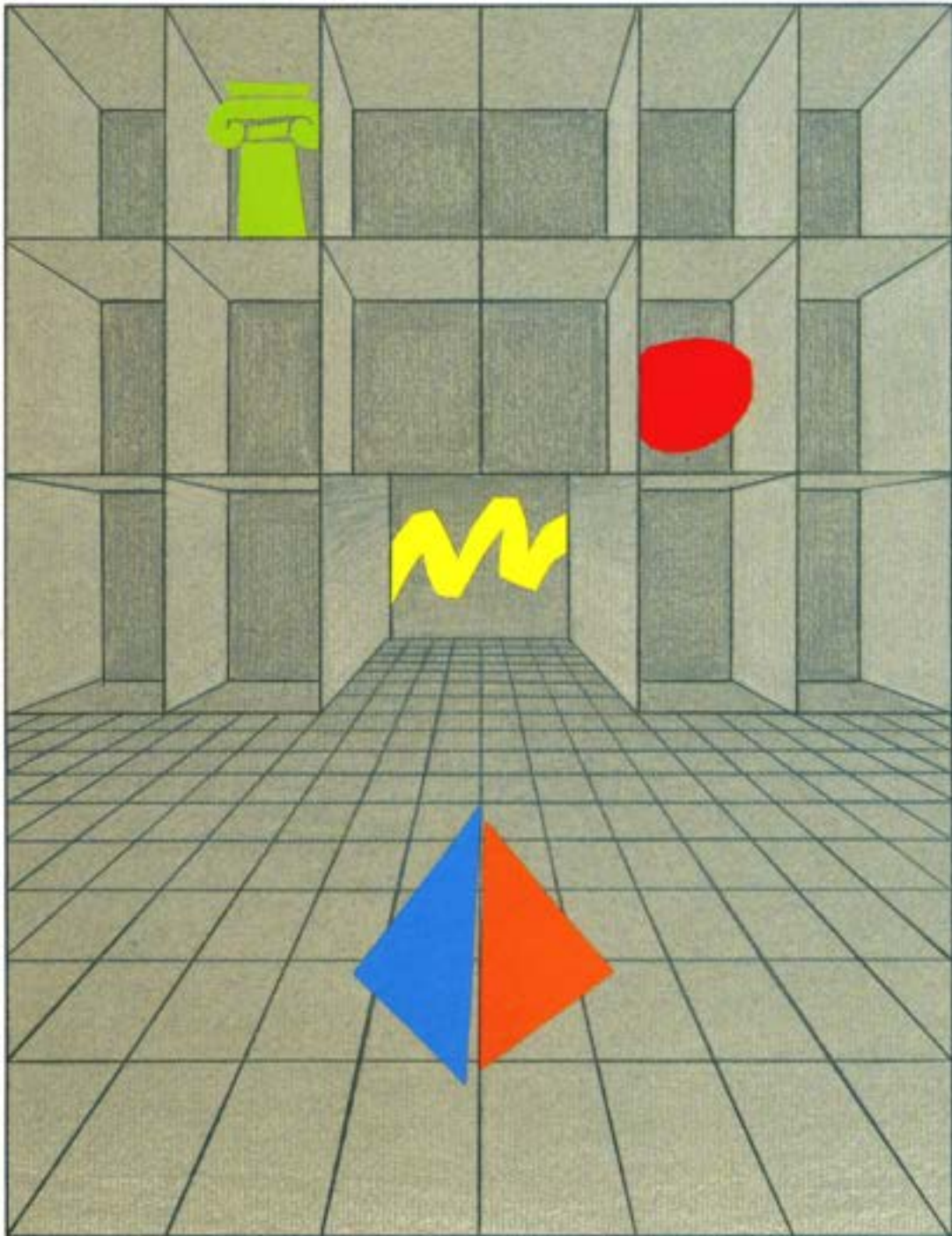


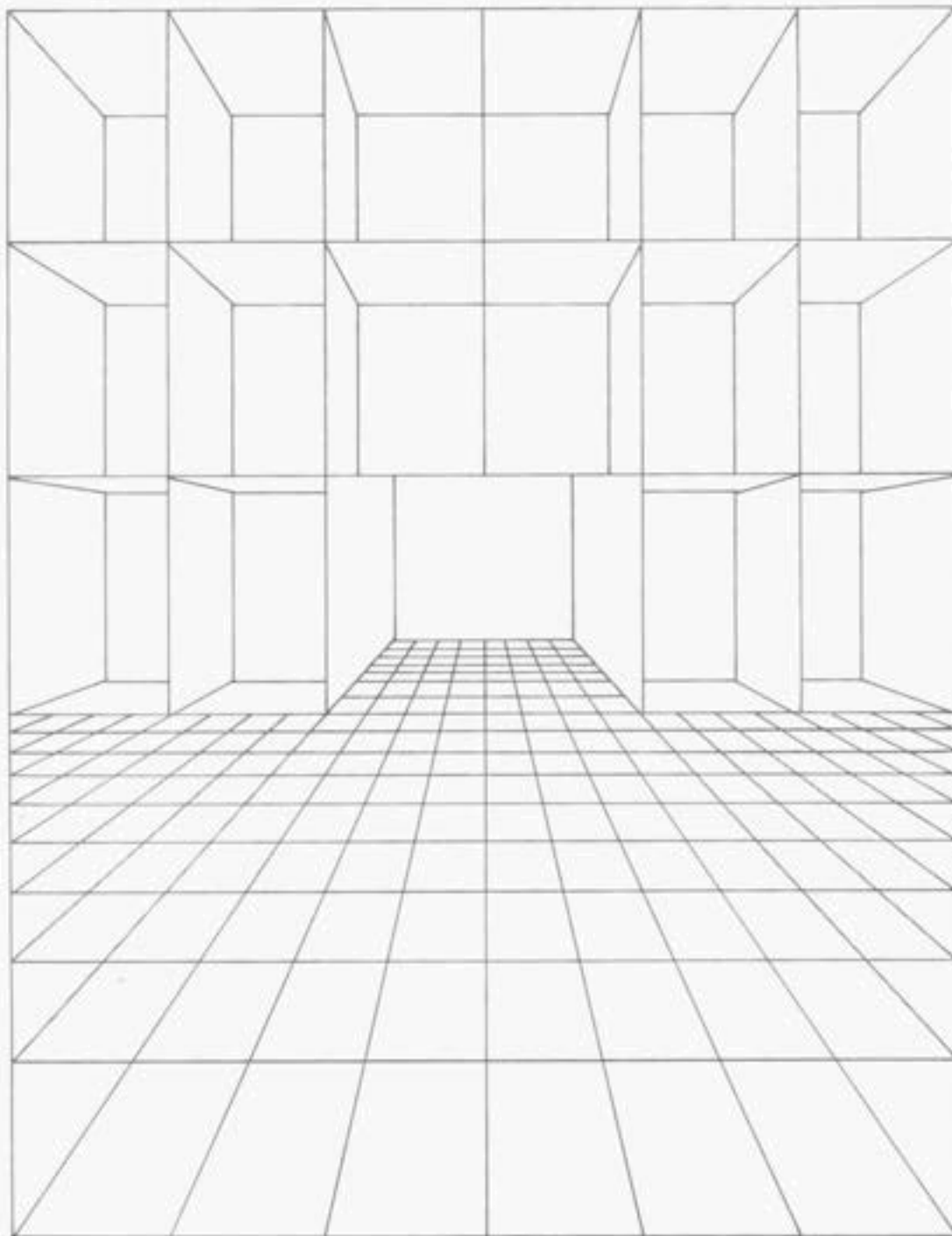
M

THE MORRIS MUSEUM



Corporations Collect: I

Corporations Collect: I



January 4 - March 15, 1992



Corporations Collect: I

Allied-Signal Inc.

AT&T

Chemical Bank

CIBA-GEIGY
Pharmaceuticals Division

Crum and Forster, Inc.

Ethicon, Inc.

Johnson & Johnson

Nabisco Foods Group

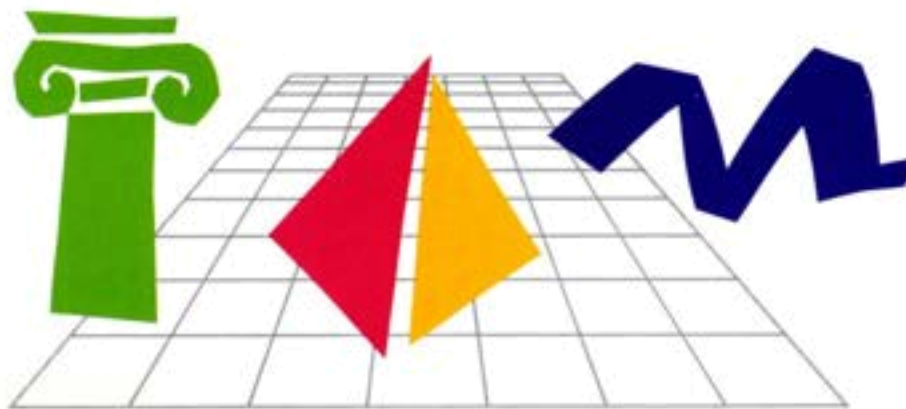
Ortho Pharmaceutical
Corporation

The Prudential Insurance Co.
of America

Schering-Plough Corporation

Shanley & Fisher

Warner-Lambert Company



M

THE MORRIS MUSEUM



NEW JERSEY
STATE
COUNCIL
ON THE
ARTS

*Funding
has been
made possible
in part by
The New Jersey
State Council
on the Arts/
Department of State*

ISBN 0-9613046-6-9

Library of Congress
Catalog Card Number:
91-067860

© Copyright

The Morris Museum, 1991.

All rights reserved.

Permission to reproduce
any portion of this catalog
must be obtained from
The Morris Museum

Executive Director's Statement

6

Curator's Statement

7

Allied-Signal Inc.

9

AT&T

12

Chemical Bank

15

CIBA-GEIGY Pharmaceuticals Division

18

Crum and Forster, Inc.

21

Ethicon, Inc.

24

Johnson & Johnson

27

Nabisco Foods Group

30

Ortho Pharmaceutical Corporation

33

The Prudential Insurance Co. of America

36

Schering-Plough Corporation

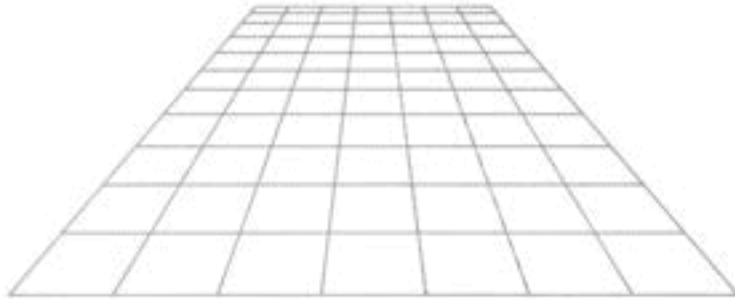
39

Shanley & Fisher

42

Warner-Lambert Company

45



Corporations Collect: I is the first in a series of corporate exhibitions The Morris Museum has planned as part of a commitment to present an overview of current art activity in the state of New Jersey.

Other ongoing exhibition programs presented by the Museum have included the New Jersey Artist Series, showcasing the work of emerging and established artists, and the Collectors Series, featuring selections from private art collections in the state.

I want to express my gratitude to all the corporations and curators who made this special exhibition possible. The high quality of the works in the exhibition pays tribute to the participating corporations. The Museum hopes to present selections from the collections of additional companies in the future.

The thirteen participating corporations are delighted to make their wonderful collections available to our museum public. The Museum applauds the corporations for their responsiveness to culture and art in New Jersey.

John D. Peterson
Executive Director, The Morris Museum

My experience as curator of this first corporate exhibition, *Corporations Collect: I*, has given me an opportunity to visit all thirteen of the participating companies' headquarters and to view their entire collections firsthand. Because of the high quality of the work I saw, choosing five pieces from each company proved to be very difficult.

As the reader can see from the following statements by each corporation, the collections are assembled for a variety of reasons, but I think all the companies will agree that the inclusion of art work in the office environment provides a quality of warmth and humanity to the workplace.

Some of the artwork proved to be controversial and bore out the old adage, "If it's not controversial, it's not art." According to the curators, in many cases initial employee skepticism gave way to lively discussion and a deep interest and enjoyment of the visual arts. Many executives were reluctant to part with their favorite pieces, even temporarily, and to them we are especially grateful.

The history of art is the history of culture because it reflects the expression of mankind's deepest emotional and intellectual capacities. In every culture, the visual arts have been an expression of individualism and personal courage.

It is important to note that these personal expressions are valued and venerated in the workplaces of New Jersey. It is difficult to assess the immediate value of these objects, since only time will tell us which of them addressed the major issues of our day. But the willingness on the part of the participating corporations to invest in the visual dialogue and to bring new ideas into the workplace speaks well for the intellectual climate of corporate New Jersey. It was a pleasure to see the creative architecture of the offices and to meet all the curators and executives who received me so warmly.

I am looking forward to working on *Corporations Collect: II* and to meeting another group of corporate collectors. The number of companies included this time was due to the limitations of our gallery space. We therefore concentrated on nearby companies. I hope the viewers will agree that on this occasion the number thirteen proved to be a lucky one.

Ann Williams
Curator, CORPORATIONS COLLECT: I

All of the pieces in the exhibition are
illustrated in this catalog.

Dimensions are given in inches:
height precedes width precedes depth.

Allied-Signal Inc.

Paintings from Allied-Signal are representative of the many pieces of fine art on display at Pleasantdale Farm, the company's conference center and management training facility in West Orange. Pleasantdale Farm is the former Nichols' family estate which was acquired by the

Corporation in the 1960's following the death of Dr. Charles W. Nichols, son of one of the founders of Allied-Signal's predecessor company, Allied Chemical & Dye Corporation.



Jan Van Dornicke

MADONNA AND CHILD
WITH DONOR

Oil on Panel

39 x 23



Sandro Botticelli
(manner of)

THE ANNUNCIATION

Oil on Panel

Florentine
15th Century

18 1/4 x 16 1/2

Andrea Del Sarto
(school of)

MADONNA AND CHILD

Florentine
16th Century

24 x 16





Alonzo Perez
LADIES' FENCING LESSON
Oil on Panel
23 1/2 x 28 1/2

**Bernardino Conti
(circle of)**
PORTRAIT OF A WOMAN
HOLDING A CHILD
Oil on Panel
29 x 21 1/2

AT&T

The interrelationship between business and the arts has been part of AT&T's long tradition of nurturing creativity and philanthropic responsibility. Works of art displayed in AT&T buildings are envisioned as a means of communicating the following to both public and employees:

Enhancing the AT&T Brand

By creating a universal and consistent mark of distinction for AT&T developed properties, AT&T is set apart as a sophisticated company with the highest standards of quality in every area of corporate performance.

By supporting the arts in both the domestic and international markets in which the company does business, AT&T enhances the quality of life in those communities

and contributes to the impression of AT&T as the most helpful company.

Stimulating Creativity in the Work Environment

By providing visually stimulating environments for both employees and customers, innovative thought concurrent with company pride and motivation is nurtured.

Supporting Emerging Artists, Especially Women and Artists of Color

By seeking out the best works of "lesser known" artists, especially women and artists of color, a premium on creativity, and revision of traditional ideas is encouraged.



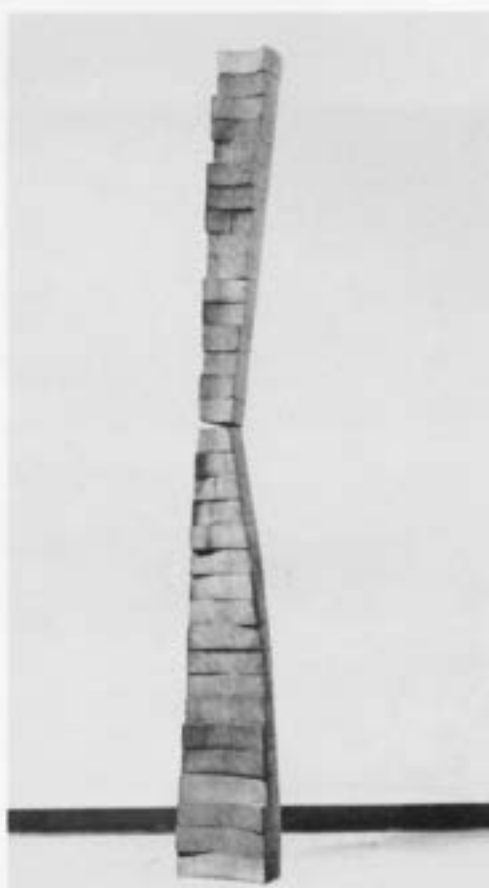
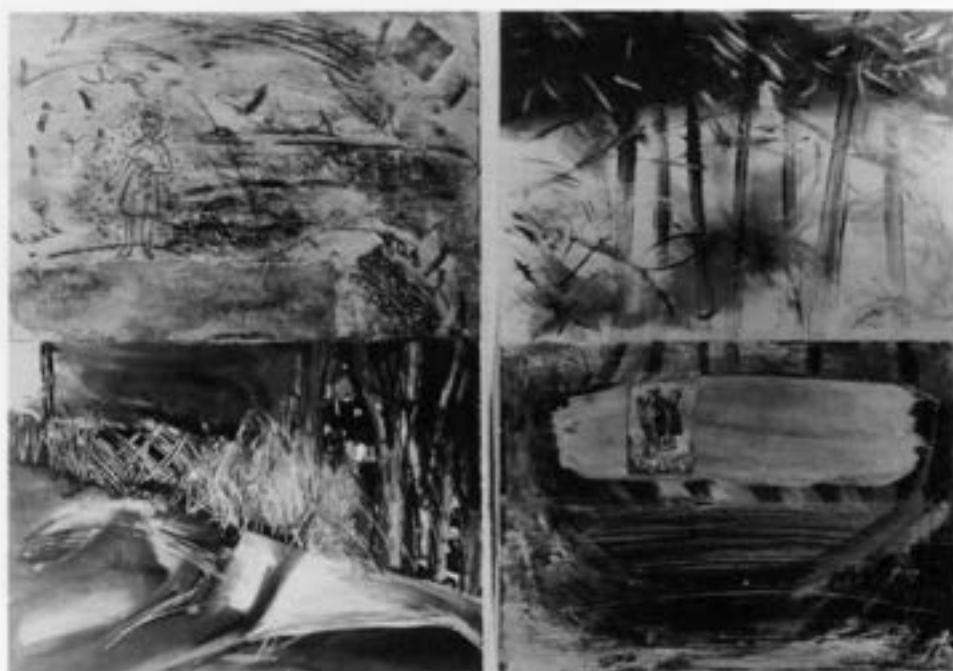
Joel Janowitz

INSIDE AND OUT (UMBRIA)

Oil on Canvas

1985

60 x 96



Candida Alvarez

THREE GIRLS DANCING
IN THE WOODS &
DOG, GIRL AND HEART

Acrylic on Paper

1985

44 x 30

Terry Adkins

SECOND STILL

Wood, Pigment

1989

110 x 13 x 25

Photo: Mami Sato/Arten



Roy DeForest

SPECULATIVE METAPHYSICS

Polymer on Canvas

1978

67 x 82

Photo: Maria Sacramento

Paul Wonner

STILL LIFE - PEARS

Acrylic on Canvas

1978

70 x 72



Chemical Bank

At Chemical, we are proud to participate in the dynamic world of contemporary art. We believe the quality of our artwork expresses for our customers and employees something about the excellence of our Chemical people and our financial services.

The hallmark of the Chemical Bank Collection is its diversity of styles, images and mediums. The collection's unity lies in the individual excellence of each work.

Sharing the art of our time is one way we express our sense of responsibility to the communities we serve. We hope you enjoy these works as much as we enjoy presenting them for public display.

Robert J. Callander
Vice Chairman and President



Lincoln Perry

ACROSS THE STREET
(& STUDY)

Oil on Canvas

1983

36 x 32

Photo: Steven Somar



Elmer Bischoff

HILLS AND LAKE

Oil on Canvas

1960

67½ x 67½

James Weeks

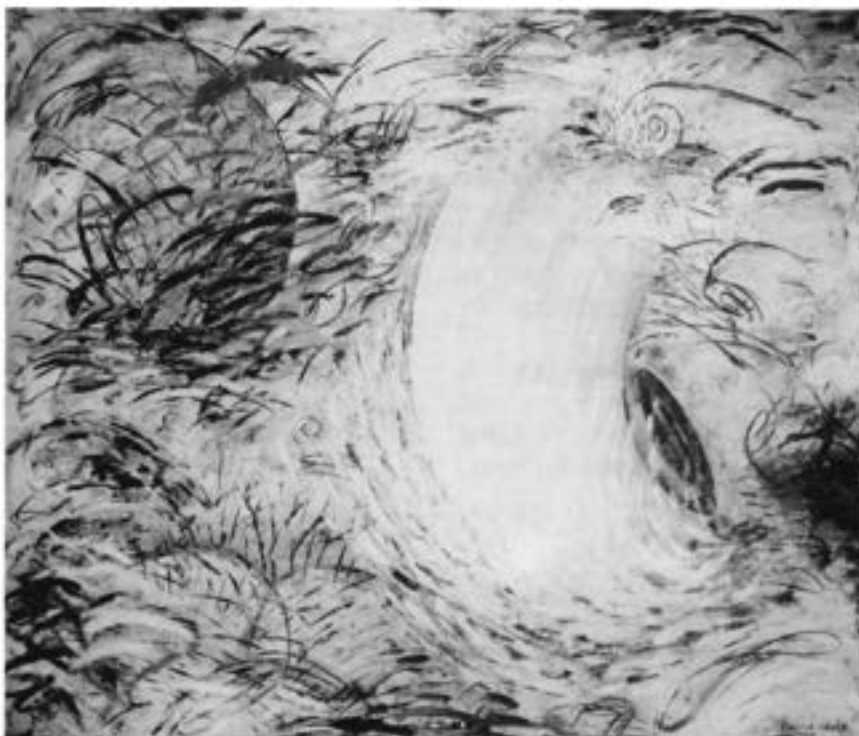
BAKER BEACH FROM A HILL

Oil on Canvas

1963

49½ x 48





Louisa Chase

BLUE WAVE

Oil on Canvas

1983

72 x 84

John Stuart Ingle

CHOCOLATE CHIPS
AND MARZIPAN

Watercolor on Paper

1983

47 x 35½

CIBA-GEIGY Pharmaceuticals Division

CIBA-GEIGY Corporation is a diversified chemical company that develops and produces pharmaceuticals, agrochemicals, dyestuffs, and a variety of special-purpose chemicals. It is the successor to CIBA and Geigy, two Swiss companies which merged in 1970. It employs 16,000 people nationwide and is headquartered in Ardsley, N.Y.

The art collection was begun in 1959 by Geigy shortly after it moved its headquarters from Manhattan to its new complex in Ardsley, a Westchester County suburb of New York City. To add color and warmth to the interior of its administrative and research facility, Geigy decided to acquire original works of art by promising contemporary artists.

Works by Swiss and American artists – primarily paintings, drawings and graphics – were originally selected. However, by 1965, the collection had so diversified that it encompassed works of artists from around the world

in many different media. To add greater unity and historical significance to the collection, the corporation began to concentrate on works of the New York School. Today the collection includes abstract expressionist, geometric and figurative works by such artists as James Brooks, Elaine de Kooning, Adolph Gottlieb, Philip Guston, Alex Katz, Joan Mitchell, Richard Pousette-Dart, Pat Steir and Jack Tworkov.

The collection now consists of over 600 contemporary oils, watercolors, gouaches, collages, drawings, multiples and sculptures, from which any employee may select a work for his office as the supply permits. These are rotated periodically among various offices and locations.

The five works in the exhibition are among those currently located at the Pharmaceuticals Division's headquarters in Summit, New Jersey.



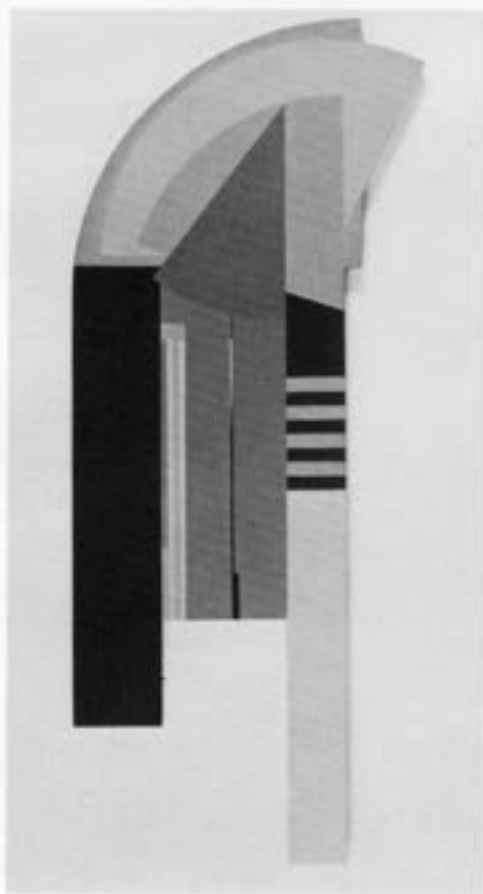
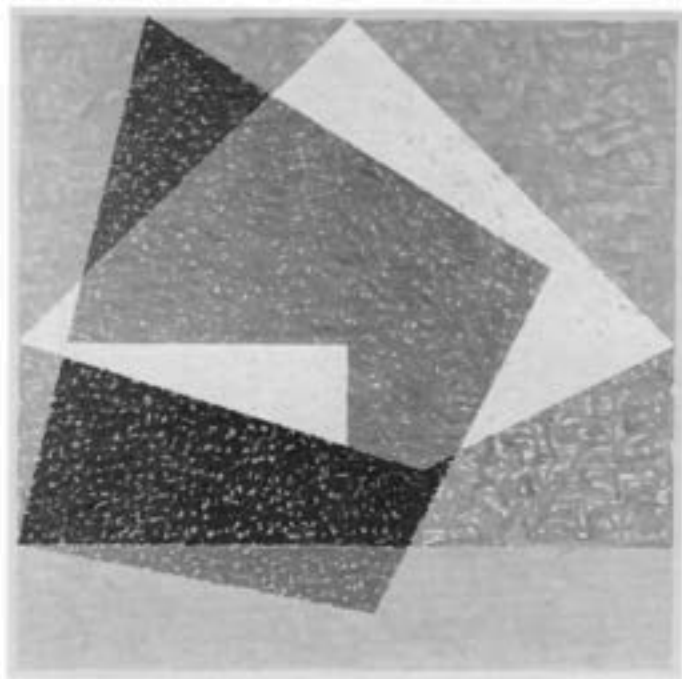
Irving Kriesberg

IMMOLATION

Oil on Canvas

1980

59 x 89 1/2



Jack Tworkov

ALTERNATIVE VII

Oil on Canvas

1978

54 x 54

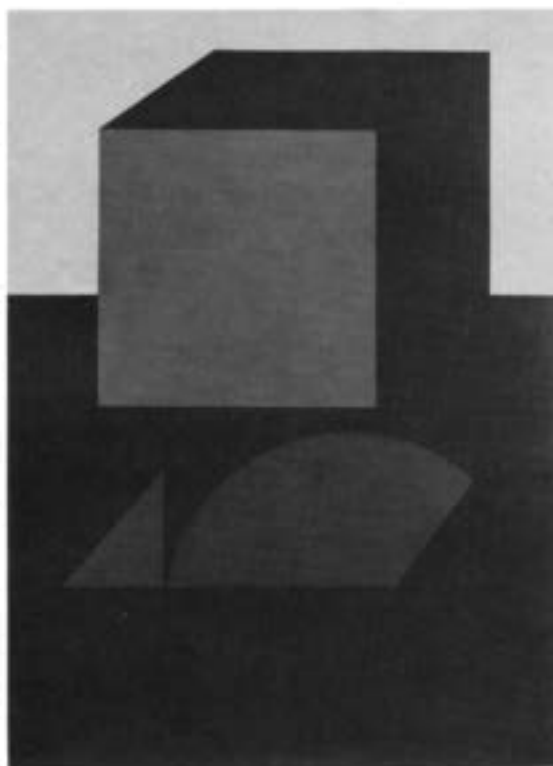
Budd Hopkins

GUARDIAN NO. 2
(LITHYIA)

Oil on Masonite

1978

52½ x 22



Joe Stefanelli

PLAN FOR ISIS

Acrylic on Canvas

1972

67 x 48

David Hare

CRONUS WALKING

Steel and Epoxy

1986

63 1/2 x 24 x 13



Crum and Forster, Inc.

Original art, whether displayed in the home or office, enhances the quality of life. It is a reflection of creativity and innovation — qualities which are equally important

in the business world. Art inspires and encourages, because it demonstrates that one person's vision and efforts can have a lasting impact.



Alice Dalton Brown

LATE ENTRANCE

Acrylic on Canvas

1983

84 x 55



Richard Haas
NOB HILL VIEW EAST
Watercolor on Paper
1978
22 x 39



John Gordon
LITTLE GATE
Oil on Canvas
1964
40 x 60



Artist Unknown

PSMO BEACH

Oil on Canvas

1983

40 x 66

Neil Welliver

WHITE TAIL DEER

Print

1983

22 x 28

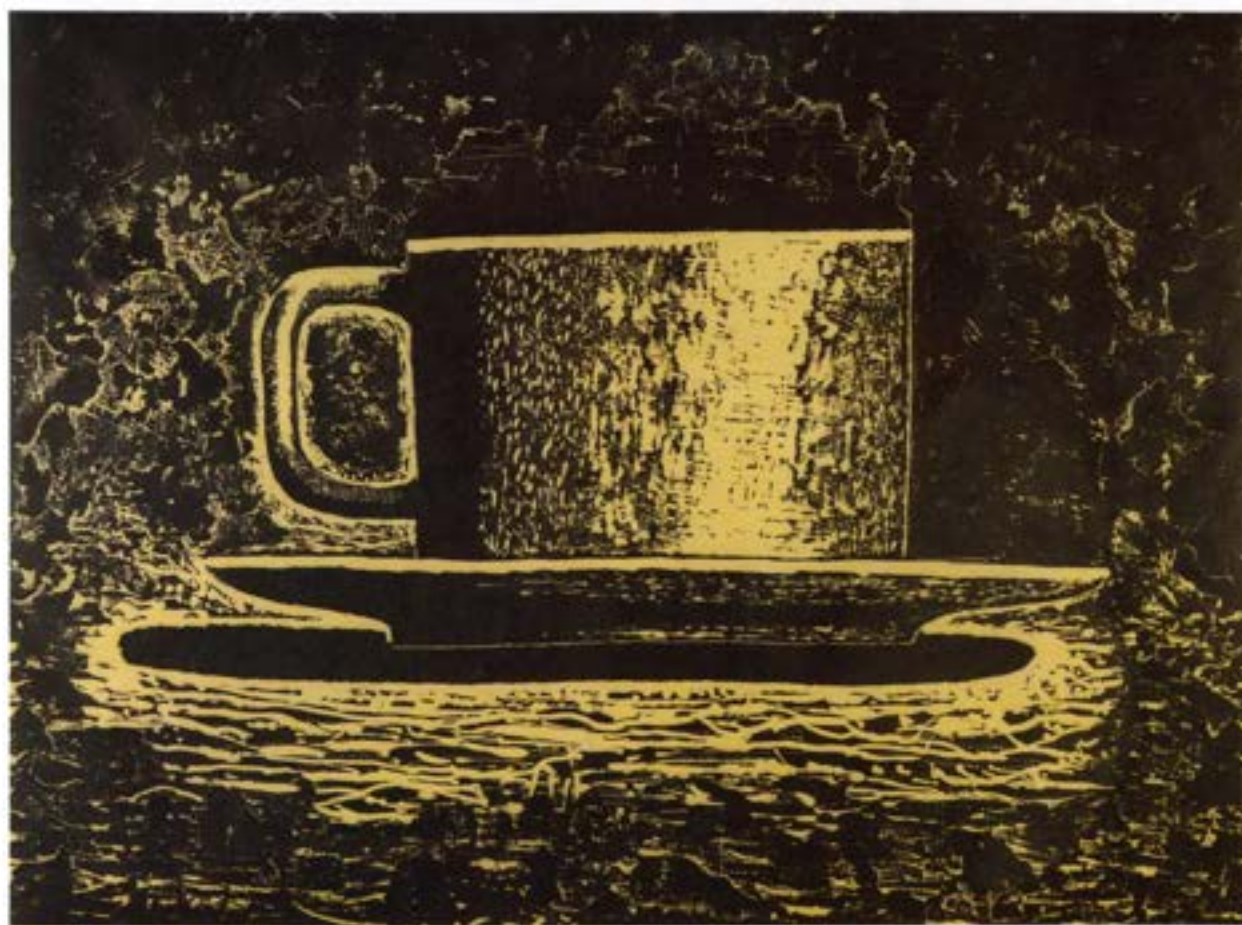
Ethicon, Inc.

Ethicon, Inc., located in Somerville, New Jersey, provides surgeons with an array of products for precise wound closure, including sutures, ligatures, mechanical wound closure instruments and endoscopic products. Through the stewardship of William Sultzer, Section Manager, Facilities Planning, Ethicon has acquired quality works on paper by major artists for over 20 years.

Drawings, prints and photographs by contemporary artists, including many New Jersey artists, are found in all areas of a building that houses manufacturing, research and administrative functions. The works on

paper lend a consistent dynamic to the vast facility. In addition, works are periodically rotated throughout the campus buildings. As with the majority of Johnson & Johnson sites throughout the country, the art work at Ethicon primarily serves the employee population, offering both a stimulating environment as well as insights into the creative process.

Michael J. Bzdek
Curator, Art Program
Johnson & Johnson Corporate Art Collection



Aaron Fink

YELLOW CUP

Woodcut on Rice Paper

1983

25 x 36



Philip Guston

BUG

Lithograph

1980

19 1/2 x 29 1/2

Photo: Robert Schelmacher

Melissa Meyer

#1

Oil on Paper

1983

42 1/2 x 30 1/2

Photo: Robert Schelmacher



A.R. Penck

IDEA FOR SCULPTURE #3

Lithograph

1982

32 x 40

Photo: Robert Schellmacher

Denise Greene

HOLLAND PARK

Oil Stick on Vellum

1982

29 1/4 x 30

Photo: Robert Schellmacher



Johnson & Johnson

The Johnson & Johnson Corporate Art Collection is one component of an overall arts program for the employees of our World Headquarters. The Headquarters complex, designed by I. M. Pei and Partners, provided impetus for Johnson & Johnson to officially organize the Corporate Art Program. In-house art exhibitions, lunchtime lectures, and museum programs are among the many dimensions of our Art Program. Throughout the Company's history, Johnson & Johnson facilities have provided the employee with a safe, clean and well-designed environment. Art complements facility design and provides the employee with an engaging, stimulating, and educational environment.

The collection encompasses a wide variety of art media and styles and focuses on contemporary American artists with a special emphasis on New Jersey artists. Pieces are periodically rotated throughout the public spaces of the

World Headquarters. In addition, employees play a part in selecting art for their immediate area.

The in-house exhibition program enables us to bring selections from museums, galleries and private collections to our employee audience. Exhibitions range from works loaned by the Whitney Museum of American Art to the New Jersey State Teen Arts Touring Exhibition. Corporate museum memberships encourage Johnson & Johnson employees and their families to regularly visit the many museums and art institutions in the metropolitan area. Through our collection, exhibitions, and related programs we hope to increase our employees' awareness of the changing art world.

Michael J. Bzdak
*Curator
Art Program*



Joan Snyder

RESOLVE BY FOUR AND EIGHT

Oil & Acrylic on Canvas

1972

48 x 72



M. Wheeler Brown

ANIMALS MADE BY ME

Drybrush with Watercolor

1970

9 x 15 1/4

Photo: Leonard Favia

William Wegman

RED GUITAR

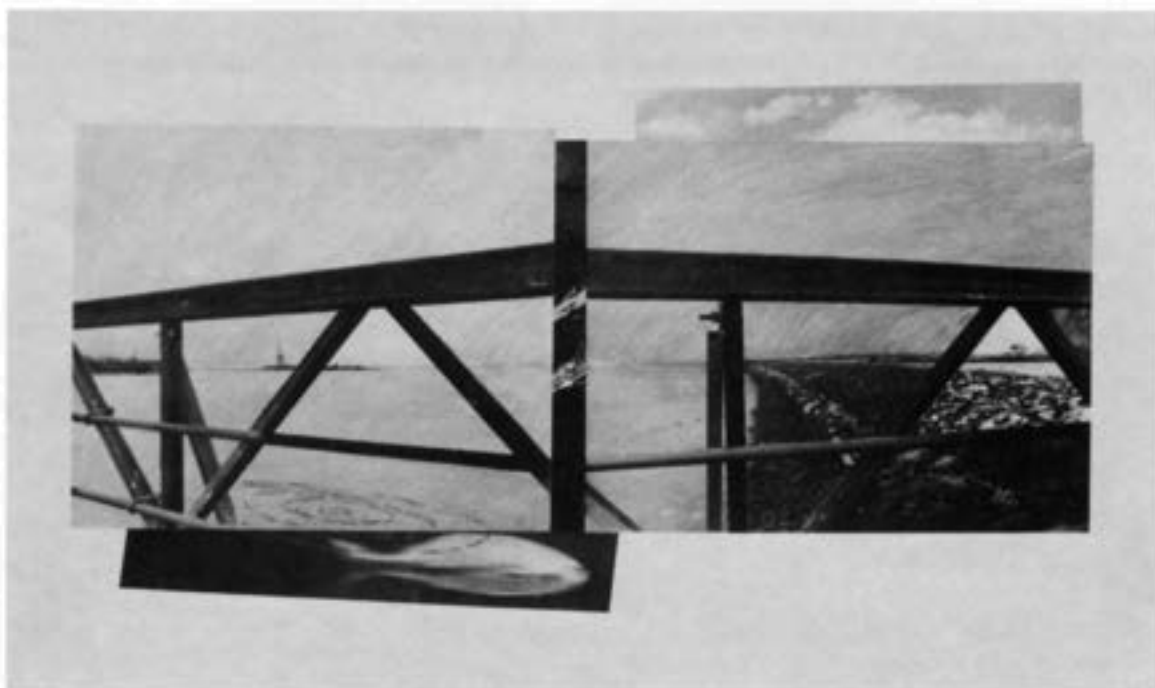
Polacolor II Print

1987

24 x 20

Photo: Leonard Favia





Geanna Merola

PASSAGE #2

Mixed Media

1988

32 x 49

Photo: Leonard Pavia

Roy Lichtenstein

UNTITLED

Colored Crayons, Pencil on Paper

1974

6 1/4 x 6 1/4

Photo: Leonard Pavia

Nabisco Foods Group

Nabisco Foods' permanent art collection features works by contemporary artists. The focus is on today's artists who are in the earlier stages of their professional careers. These men and women show promise of becoming renowned artists of tomorrow. The Nabisco collection is

diversified with art work in various styles and media. The permanent collection, as well as the changing exhibits displayed in the prestigious Nabisco Gallery in East Hanover, offer employees and visitors the opportunity to view quality art on a regular basis.

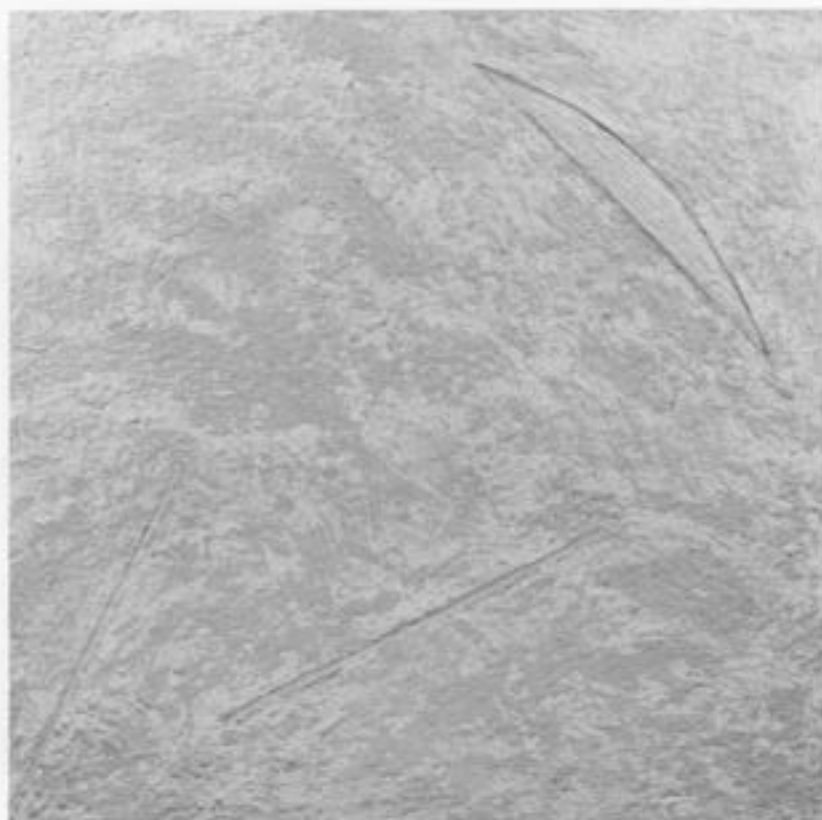


Peggy Zalucha

COOKIES AND MILK
ON FUNNIES IV

Watercolor on Paper

44 x 58



Ian Hornax

LANDSCAPE RELATING TO
MUSIC, VARIATIONS #2

Acrylic on Canvas

1978

42 x 60

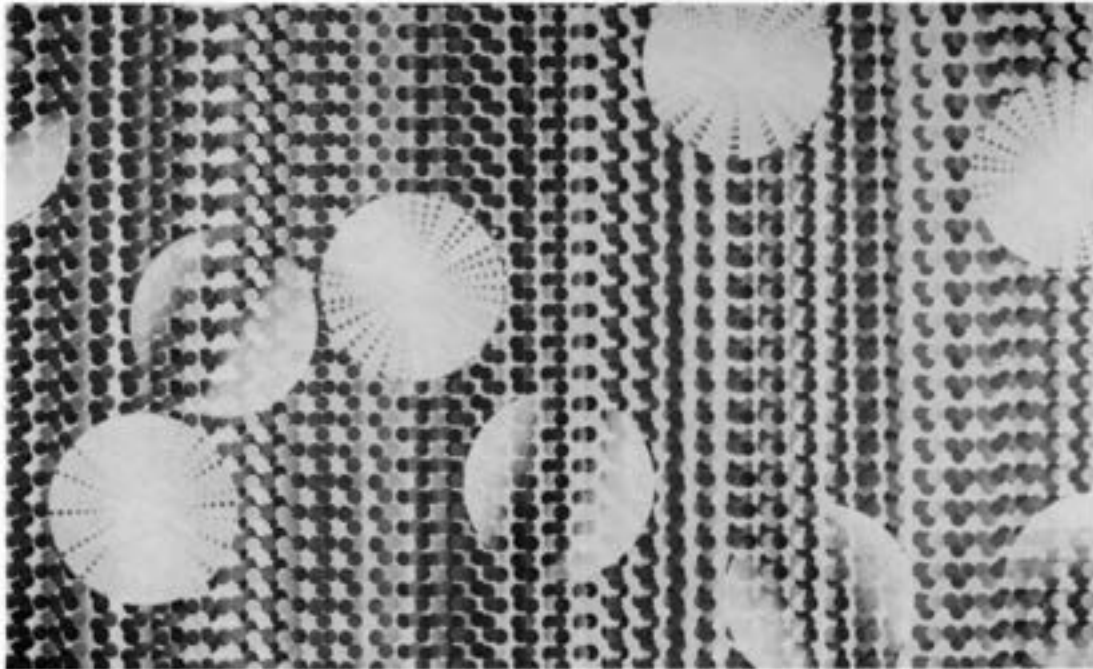
Kay WalkingStick

PAINTED DESERT

Acrylic and Wax on Canvas

1986

48 x 48



John Spears

CIRCLES

Silkscreen on Fabric
with Acrylic

36 x 60

Joseph Konopka

ROUTE #9

Acrylic on Canvas

1972

42 x 48



Ortho Pharmaceutical Corporation

Ortho Pharmaceutical Corporation, located in Raritan, New Jersey, is a leader in prescription products for family planning. Major building addition and renovation projects in 1982 prompted Ortho Pharmaceutical Corporation to enhance their new space with a selection of art works. Ortho's commitment to the art in the work place continues through art education lectures provided to employees and a small-scale changing exhibition program which regularly brings works from individual artists and collections to Ortho.

Nature is the underlying theme of Ortho's art collection. The primary goal of the new Ortho building was to

incorporate the outdoor environment with the interior work space. Works of art concerning the theme of nature were selected to help meet this goal. The collection includes important pieces by noted artists Ned Smyth, Buckminster Fuller and Jean Dubuffet.

Recently, Ortho added a large-scale work by Reginald Neal (included in this exhibition) as well as a tripartite fiber piece by Princeton artist Joy Saville.

Michael J. Bzdak
Curator, Art Program
Johnson & Johnson Corporate Art Collection



Reginald Neal

WATER LILIES

Oil on Canvas

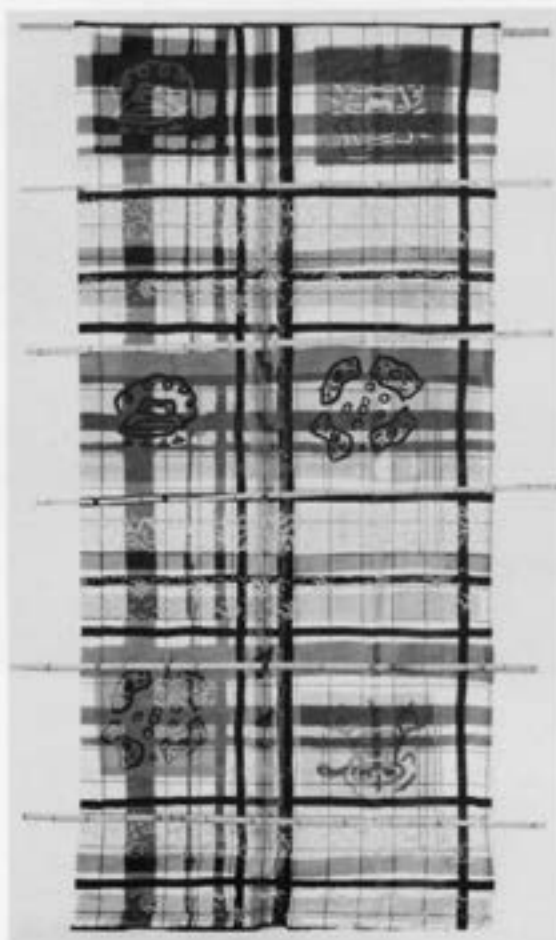
1964

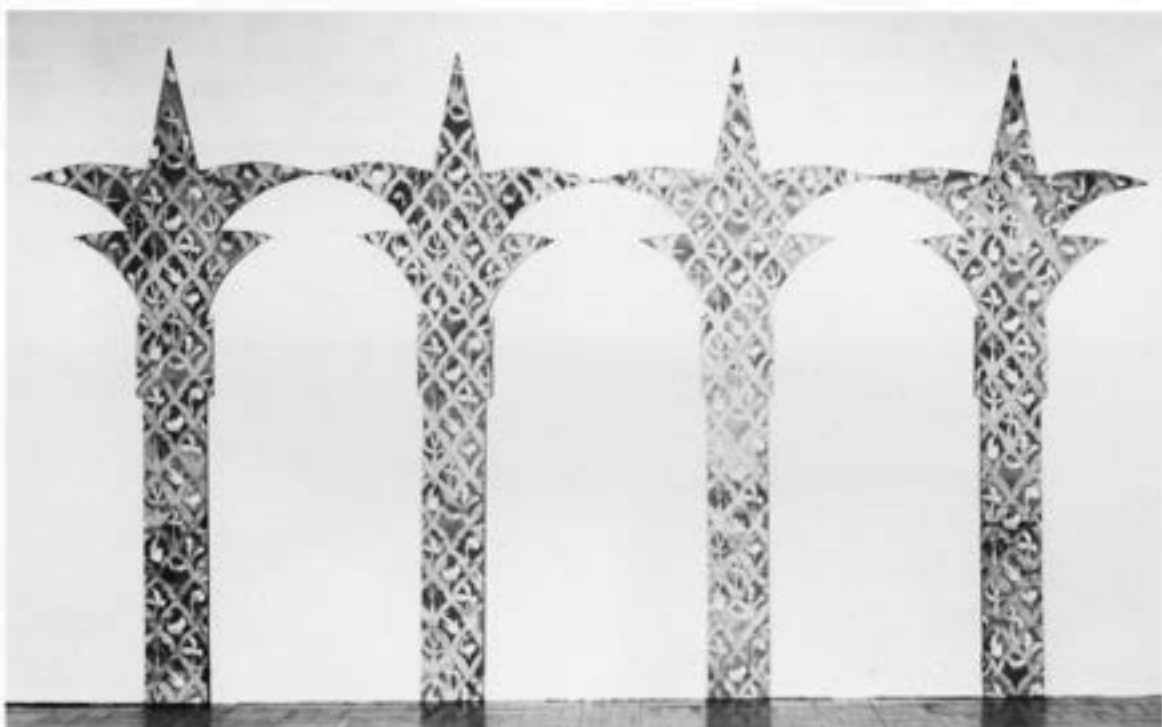
44 x 60



Jean Dubuffet
PARCOURS
(TO TRAVEL THROUGH)
Sengraph on Silk
with Paper
1981
22 x 228

Kim MacConnel
BAMBOO CURTAIN
Silkscreen on Cotton Satin
with Bamboo
1978
108 x 63
*Created at
The Fabric Workshop, Philadelphia*





Ned Smyth

PHILADELPHIA PATTERN
PALM (ARCADE)

Serigraph on Cotton Satin

1979

108 x 46 (each)

Created at
The Fabric Workshop, Philadelphia

Ned Smyth

PHILADELPHIA
PATTERN PALM

Serigraph on Cotton Satin

58 x 300 (detail)

The Prudential Insurance Co. of America

Prudential's Art Program is recognized as one of the most significant collections of contemporary art. The collection is comprised of over 11,000 works reflecting Prudential's commitment to supporting the emerging artists. Since the program was initiated in 1969, there are also works by numerous masters of contemporary art.

One of the major functions of the collection is to serve as museum for employees nationwide. Installed in both public and private offices, the art enhances the work

environment and brings culture to employees on a daily basis. The company endorses the belief that art installed in the work place stimulates creative thinking.

The Art Program supports the company's role as a community leader, acquiring art from the various regions in which facilities are located. A major objective of the program is to share social and moral responsibilities as a good corporate citizen and to support the creative sector of society.



Creighton Michael

NAVIGATOR 2

Oil on Linen, Shellac on Wood

1990

51 x 53 x 8 1/4



scarlet berries all



T.L. Solien
(UNTITLED)
"scarlet berries all"
Oil on Canvas
1989
93 x 66

Italo Scanga
HEAD #1212
Oil on Wood
1987
17 1/2 x 13 x 9



David Bierk
PEACE AND PLENTY TO INNESS
Oil on Canvas on Panel
1988
36 x 18

Andrew Moore
CDL
Extacolor Plus Color Print
1991
91 x 37



Schering-Plough Corporation

We have sought to form an eclectic collection of works to demonstrate the vibrantly diverse styles and media utilized by New Jersey artists.



Bill Barrell
BIRD, CAT, AND FLOWERS
Oil on Canvas
1978
54 x 87



Robert Starkey

BLOWING

Oil on Canvas

1982

49 1/2 x 97

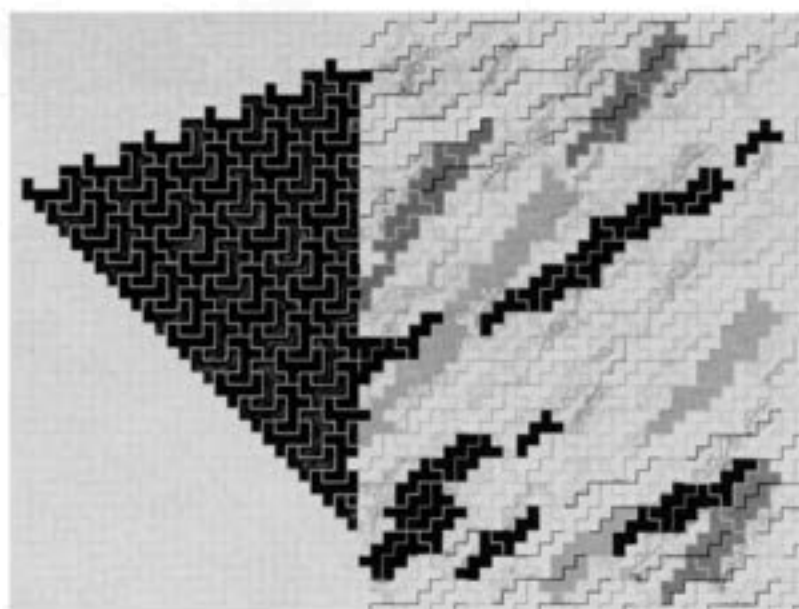
Mel Leipzig

BY THE STAIRWAY

Acrylic on Canvas

1982

61 x 66



Nancy Shand

ASH GROVE

Pastel on Paper

1986

33 x 89

Hiroshi Murata

KURO TAKI

Oil on Canvas

1982

50 x 66

Shanley & Fisher

Shanley & Fisher's collection of original prints and paintings focuses on the acquisition of contemporary art in styles ranging from abstract expressionism to traditional watercolors. This eclectic assemblage works well in a modern office environment.

The collection includes artists such as Copp, Hobbie and Lenker and internationally known artists Fanch, Lebadang, and Michael Delacroix.



Hyun Ho Shin

UNTITLED

Watercolor on Paper

20th Century

35 x 85



Karbijian
IN THE WIND
Color Etching
1989
25 x 26

Spenser Saunders
UNTITLED
Photograph
20 x 15



Jane Eccles
FROM MILLER'S FARM

Monoprint

1984

24 1/2 x 32 1/2

Gordon Newton

UNTITLED

Black Crayon with Natural Stain
on Paper

54 x 36



Warner-Lambert Company

Warner-Lambert Company has acquired for its Corporate Headquarters a cross-section of artwork (original oils, watercolors, screens, tapestries and ceramics) with an emphasis on an oriental theme.

The primary purpose of this collection is to enhance the environment of executive offices and common areas (Cafeteria, Dining Rooms, Conference Rooms and Lobbies).



ANCESTOR SCROLL

Chinese

Watercolor on Paper

74 x 46



BURMESE MUSICIANS (PAIR)
Burma
Carved Wood
c. late 19th, early 20th century
15 High (each)



COROMANDEL SCREEN
Chinese
c. 19th century
72 x 64



COROMANDEL SCREEN

Chinese

c. 19th century

72 x 93

CHINESE SCHOLAR

China

Watercolor on Paper

early 20th century

56 x 36

Photographs of works in this exhibition
have been provided by the participating corporations
or as noted.

Catalog design: Martin Holloway Graphic Design

Printing: Hughes Printing Company, Allentown, PA

Typesetting: About Faces Graphics



THE MORRIS MUSEUM

Six Normandy Heights Road
Morristown, New Jersey 07960
201.538.0454
